



the town of Islip's
mac arthur airport

its dynamic past...

its extraordinary future

A report to industry and the community on

MacArthur Airport's 20th anniversary



Supervisor Thomas J. Harwood

**"an investment
that effects
your future..."**

a message

from thomas j. harwood, Supervisor



The Town of Islip is similar to a large corporation. You, the residents, are its stockholders. It is your town board's obligation to keep you informed on Islip's investments that affect your future. An important asset of our town is MacArthur Airport. Contained in this 20th anniversary report is a story of the growth and progress that has produced service and economic benefits to all of our citizens. It has been your support that has made this success story possible and your pride in the achievements of MacArthur Airport that has encouraged your town officials and many dedicated private citizens to continue Islip's program of the sensible development of your airport. We hope you find the facts contained in this report both interesting and informative.

your Islip Town Board



Councilman Donald J. Kuss



Councilman Herman K. Hammer



Councilman Gordon L. Taylor



Councilman Ridgeway T. Haggerty

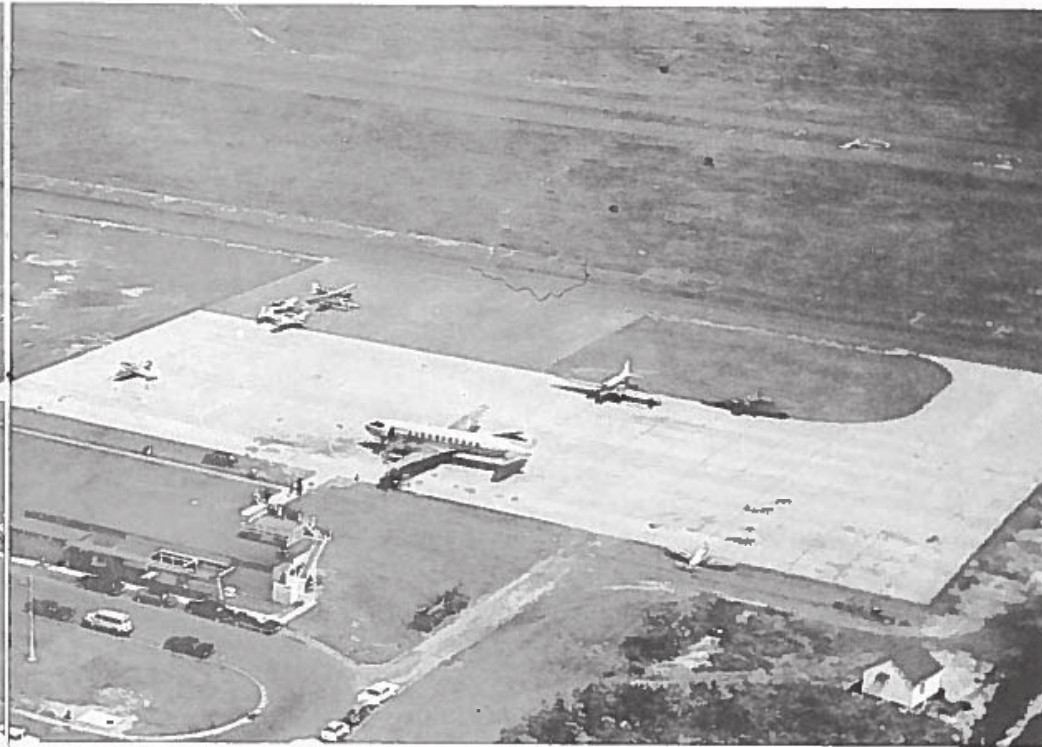
your airport...

In 1943 airports were desperately needed for the defense of our country. Moved by a patriotic desire and determined to make a lasting contribution to the war effort, your Islip Town Board signed an agreement with the government for the construction of a landing field on some 1200 county-owned acres in the northeast corner of the township. MacArthur Airport was born. Since that time your airport has proven itself to be an even greater ally in its peaceful capacities, to the people of Islip Town. The years have seen MacArthur Airport emerge as one of the town of Islip's most important assets. Its present state of proficiency has resulted from the carefully controlled, rigidly supervised plans for MacArthur Airport's progress by the elected officials of your Islip Town Board. This is your airport. It will continue to work for the economic growth and development of Islip Town and its residents. It will continue to operate as a "boon" to the community... never a burden.

The speculative promise of future rewards, brought about through accelerated, costly programs, which would come at the direct expense of the people of Islip, will not be included in your town board's blue-print for MacArthur Airport's progress.



Spacious MacArthur Airport is capable of accommodating most transport planes in operation today. It features three, five-thousand foot hard surfaced runways with a completely equipped instrument landing system. Many hundreds of



acres of undeveloped land encompass the field. This acreage was judiciously included in the master plan for your airport to act as a safety buffer zone and noise depressor area for the convenience and safety of the residents. To

increase the safety and protection factor, your town board has recently enlisted the support of the Volunteer Fire Department of Holbrook, Bohemia and Lakeland to service the field.



Mr. Edward Schafer has served as manager of MacArthur for the past twelve years. He and the members of your Islip town government cordially invite you and your neighbors to tour the field.



The Control Tower is the center of flight operations. It provides employment for several technically trained members of Islip Town who direct its activities.



Your modernistically designed and constructed Terminal Building is the service center for the transfer of passengers and their property. It houses ticket counters, executive offices, dining facilities and other concessions and facilities for the comfort of passengers. Free parking is available adjacent to the terminal building.





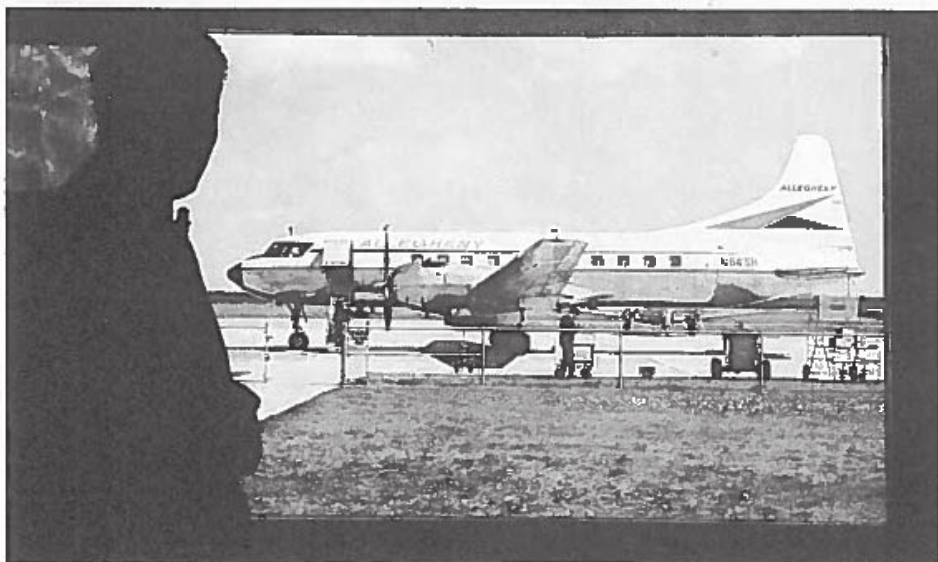
LESLIE BARNES, President
Allegheny Airlines

allegheny airlines

With the inauguration of regularly scheduled passenger and freight service by Allegheny Airlines in 1960, new vistas were opened for the residential, business and industrial life of Islip Town. In the short span of one year your airport has provided the terminus for more than 15,000 passenger flights and over 190,000 pounds of regular and express freight.

In addition to the valuable service it renders, Allegheny also provides the Town of Islip with revenue derived from landing fees.

Mr. Barnes, president of Allegheny recently had this to say of MacArthur: "MacArthur Airport, the people of Islip Town and Islip Town Board have come through with flying colors. Our fondest expectations for our service has been more than realized. We anticipate an even greater future for Allegheny in Islip Town. My personal thanks to the people of the Town of Islip and to the Town Board for their cooperation and visionary planning which has brought the benefits of the Air Age so constructively to Islip. A job well done, indeed."



Allegheny Airlines and MacArthur Airport provide fast, economical service to twelve states and connections to all points on the globe.



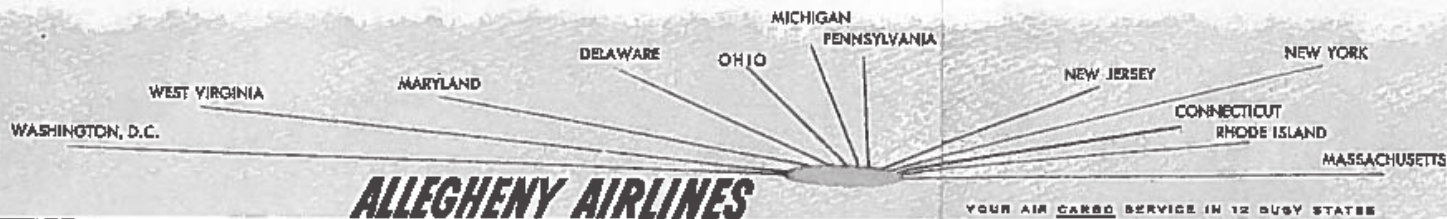
A typical scene at MacArthur Airport during arrival and departure time.



Modern, convenient ticket counters in the Terminal Building.



Speedy freight express service for all segments of Islip Town's community.





mac arthur...dynamic factor

MacArthur Airport's value to the economy, wealth, growth and general welfare of Islip Town and its residents comes into sharp focus when analyzed in terms of its magnetism in attracting industry to the Town of Islip.

In the past eighteen months alone, MacArthur Airport was an influencing factor in the development of more than 500,000 square feet of new industrial plant space in the Town of Islip!

What does this mean to you as individuals and to the Township as a whole? Simply... An increased source of wealth that reflects on every phase of the community... thousands of new jobs in Islip for Islip residents, which will eliminate for many, traveling out of the community to their jobs... revenue to relieve school taxes... new and improved recreational facilities... more purchasing power for the people of Islip... enhancement of Islip Town's position as a leading community for plant relocation and development, that assures an era of even greater growth and prosperity for the community and its members.

The firms below, located at the field, are directly related to the aircraft industry. They have contributed greatly to MacArthur Airport's progress and development and also contribute revenue to the Town of Islip for the leasing and rental of buildings.

in the growth of Islip



VIEWLEX, INC., HOLBROOK - 70,000 square feet, employs 250 persons

"Our search for a site to accommodate future expansion requirements of Viewlex was conducted on an extensive basis. Every possible location in the metropolitan area and throughout the country as well, was closely scrutinized. In the final analysis, Islip's unparalleled industrial boom—an indication of its acceptability by industry—and its superiority in plant sites, transportation facilities, versatile labor pool and the prime importance of the services of an airfield in our 'huckyard' were the deciding factors."

LOUIS A. PEIREZ, President
Viewlex, Inc.



Sperry Rand Corporation



Airmar Radio Service



Central Aviation and Marine



Swiftite Corporation



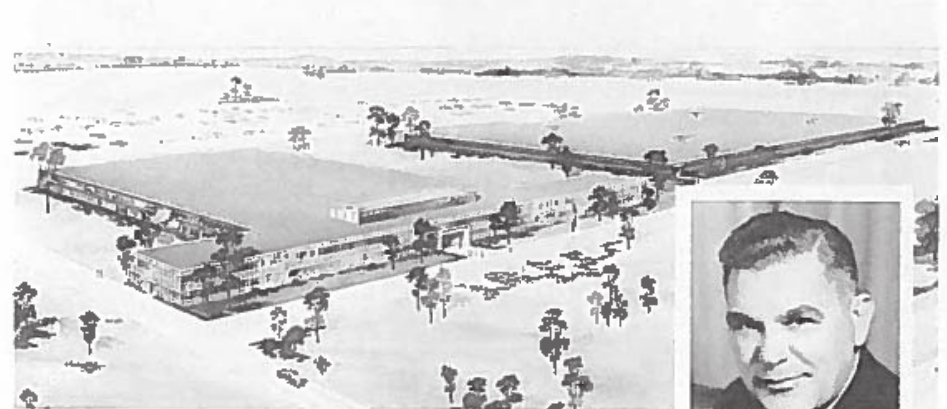
Aero Trades



Airport Industries, Inc.



Long Island Airways



MAXSON ELECTRONIC CORP GREAT RIVER - 240,000 square feet, employs 800 persons

"Our management's decision to select Islip over other areas, including New Jersey, Westchester County and Lower Connecticut, was predicated on a number of crucial factors. Among these were the availability of skilled manpower, sizable plant sites, efficient transportation, accessibility to the facilities of MacArthur Airport, and ample utilities to take care of our growth needs. With all the facts at hand, our new Islip location seems to us a most prudent decision."

JOSEPH A. FRABUTT, President
Maxson Electronic Corp.



RICHIEU PEARL, INC., HOLBROOK
70,000 square feet, employs 400 persons

"Islip Town and MacArthur Airport represent an unbeatable combination. Its excellent transportation facilities, unlimited labor pool, fine residential and recreational facilities, and an airport literally on our doorstep were factors too important to be disregarded. We look forward with great expectation to our new Town of Islip home."

JOSEPH H. MEYER, President
Richieu Pearl, Inc.



MAJESTIC MOLDED PLASTICS, INC., HOLBROOK
70,000 square feet, employs 150 persons

"The availability of a suitable plant site close to MacArthur Field was the major factor in locating our plant in the Town of Islip rather than other communities. The service it provides our executives in convenient air transportation, enabling them to keep up with busy schedules with a minimum loss of time is an important bearing on the success of our company; particularly since our customers are located nationwide."

HENRY WISH, President
Majestic Molded Plastics, Inc.



DULON, INC., HOLBROOK
10,000 square feet, employs 40 persons

"The Town of Islip's skilled labor force and the availability of MacArthur Airport were two prime reasons why we selected Islip to build our new plant. Our products require the use of trained personnel, a labor problem which was quickly overcome through the diversified labor skills of the people of Islip Town. Our need for the fast delivery of our merchandise to all points in the country were solved through the facilities of MacArthur Airport."

HAN WONG, President
Dulon, Inc.



DAYTON T. BROWN TESTING LABORATORIES, Bohemia
28,600 Square feet Employs 110 persons

As a service organization, our engineers and those of our clients are often required to commute to and from our plant on short notice, and the proximity of MacArthur and its economical and convenient services makes this a highly practical operation of our business.

The town of Islip has an ideal tax structure and a progressive planning board. We can certainly recommend Islip to any companies that are planning relocation."

ERNEST E. TEALEY, Vice President
Dayton T. Brown, Inc.

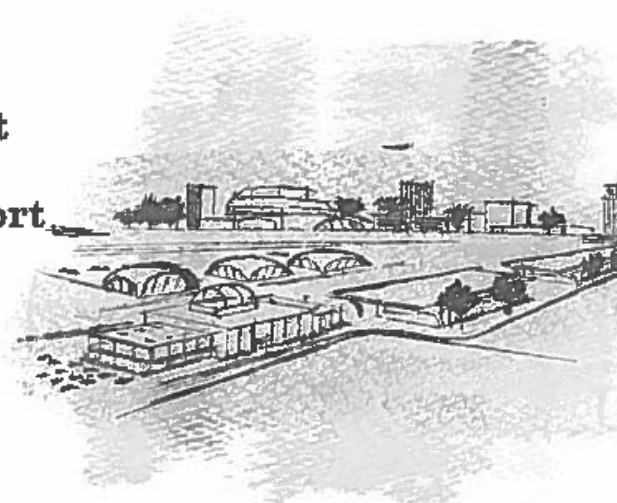


ROTATING COMPONENTS, INC., Bay Shore
60,000 square feet
Employs 125 persons

"Islip's abundance of skilled, electronically trained personnel and the decided advantage of the facilities of MacArthur Airport were two of the many factors offered by Islip Town which influenced our relocating from Brooklyn. Every factor indicates our decision to be most wise and will favorably affect our competitive position in a highly competitive industry."

Arthur G. Miller, President
Rotating Components, Inc.

what
mac arthur airport
means to
Islip town
today



The vital role MacArthur Airport plays in contributing to the prosperity of our community is more clearly understood when analyzed in terms of the new industry, and consequently new jobs, it has helped to create.

Here are the benefits that recently established industry and new industry in various stages of construction can mean to the Town of Islip.

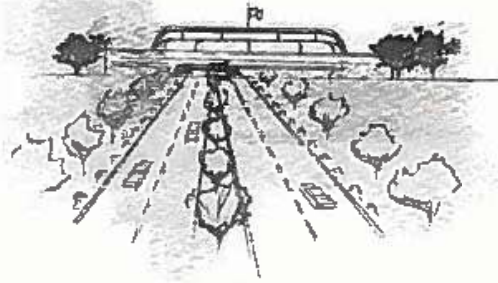
- Approximately 3,500 new jobs
- \$19,750,000 more personal income per year.

- \$9,450,000 more bank deposits.
- 3,715 more passenger car registrations.
- 160 more retail establishments.
- \$12,600,000 more retail sales per year.

"The foregoing are projected estimates based on a New York State nine-county analysis. "What 100 new jobs mean to your community."

AND... In residential tax relief revenue, this additional industry will contribute approximately \$125,000.





what
mac arthur
airport
means to Islip



With the rigidly controlled master plan for MacArthur Airport's growth, your airport will continue to expand and develop its service to you. Here are some of the important steps your town board has taken to ensure the continuation and expansion of benefits to the people.

- Advanced negotiations for a second airline to supply additional service to the New York State area.
- Greater accessibility through direct connections with expressways and other major arteries.
- Increased safety and freedom from noise by expansion of safety buffer zones.
- Land set aside for possible future use as a helicopter landing strip.
- Advanced discussions with the U.S. Post-Office Department for the establishment of a central airmail terminal.

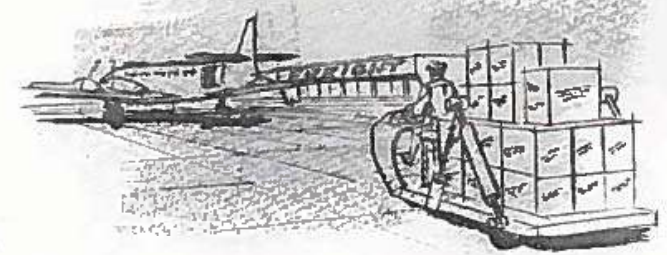


town tomorrow...

- Cooperated with the Government for the installation of a \$15,000,000 Government financed Federal Aviation Agency Air Traffic Control Center.
- Negotiated with the Government to construct and operate a new control tower which will save the taxpayers \$60,000 per year in salaries.
- Prepared plans for increased terminal facilities.

The above will result in a mushrooming economy, more jobs and better living for you and the town without destruction of our beautiful countryside and local community individuality, freedom and charm.

MacArthur is more than an airport...it's an open door of opportunity for Islip Town.



leigh fisher report...

Your town board was recently authorized to engage the services of Leigh Fisher Associates, the country's most noted airport research experts, to evaluate and formulate a master plan for MacArthur Airport. The following is a preliminary statement from Mr. Fisher.

PLANNING SERVICES • MANAGEMENT APPRAISALS • MARKET STUDIES • FINANCIAL ANALYSES • ACCOUNTING SYSTEMS • ADVISORY SERVICES

LEIGH FISHER ASSOCIATES, INC.
 AIRPORT PLANNING, MARKET AND FINANCIAL COUNSELLORS

P. O. BOX 8007 • SAN FRANCISCO INTL. AIRPORT • OXFORD 7-8420
 SAN FRANCISCO 38, CALIFORNIA

REGIONAL OFFICE
 100 SOUTH WABBLE STREET
 CHICAGO 5, ILLINOIS
 TELEPHONE 474-1100

P. O. BOX 200
 WASHINGTON NEW ORLEANS
 TELEPHONE 42-1244

October 5, 1961

Mr. Thomas J. Hatwood
 Supervisor
 Town of Islip
 Islip Town Hall
 Islip, New York

Dear Mr. Hatwood:

As airport consultants to the Town of Islip we are undertaking certain investigations preliminary to the recommendation of a long-range master plan and industrial development program for MacArthur Airport.

MacArthur Airport is one of the Town of Islip's major growth assets. The rapid growth of both scheduled airline and business executive aviation over the past several years has made the development of well planned airports essential to the long-range economic growth of a community's commerce and industry. Our experience in establishing development programs for airports throughout the world over the past 15 years has clearly indicated the importance of a well planned airport to a community's economic life.

Our preliminary investigations with respect to MacArthur Airport indicate that proper planning and development, undertaken over the next several months, can make MacArthur Airport well suited to serve the central Long Island economic area as an important scheduled and non-scheduled air transportation facility.

The Town of Islip is to be congratulated for its foresightedness in realizing the potential of MacArthur Airport, and undertaking to preserve that potential through proper land use and land development planning insuring that MacArthur Airport will remain a major benefit rather than a detriment to the Town of Islip and the entire central Long Island economic area.

We are most pleased to be associated with the Town of Islip on this most important airport planning project.

Yours very truly,
 LEIGH FISHER ASSOCIATES, INC.
Leigh Fisher
 Leigh Fisher

"...on the threshold of a new era"

an important message
 from your airport chairman
donald j. kuss



Suffolk County and its residents are on the threshold of a new era. MacArthur Airport will play an important part in Long Island's future development. Our citizens will demand, and rightfully so, intelligent planning and constructive action that will properly develop and protect our assets. The industrial growth and increased services offered by MacArthur Airport have been the result of a team effort guided by the needs of our people.

Realizing that Long Island is primarily residential in character, MacArthur's growth has been and will con-

...tinue to be rigidly controlled to protect our residents from offensive noise and danger.

Since MacArthur is located in Islip and we are affected most closely by its growth, it is only right that it remain the property of Islip's residents.

Your town board is pledged to maintain this policy and prevent any activity that would change MacArthur into a giant, objectionable jet port. With your help and continued support, this policy will be maintained.

